

EED on the web

Earth Energy Designer for power users

December 22, 2016

BLOCON

www.buildingphysics.com

Contents

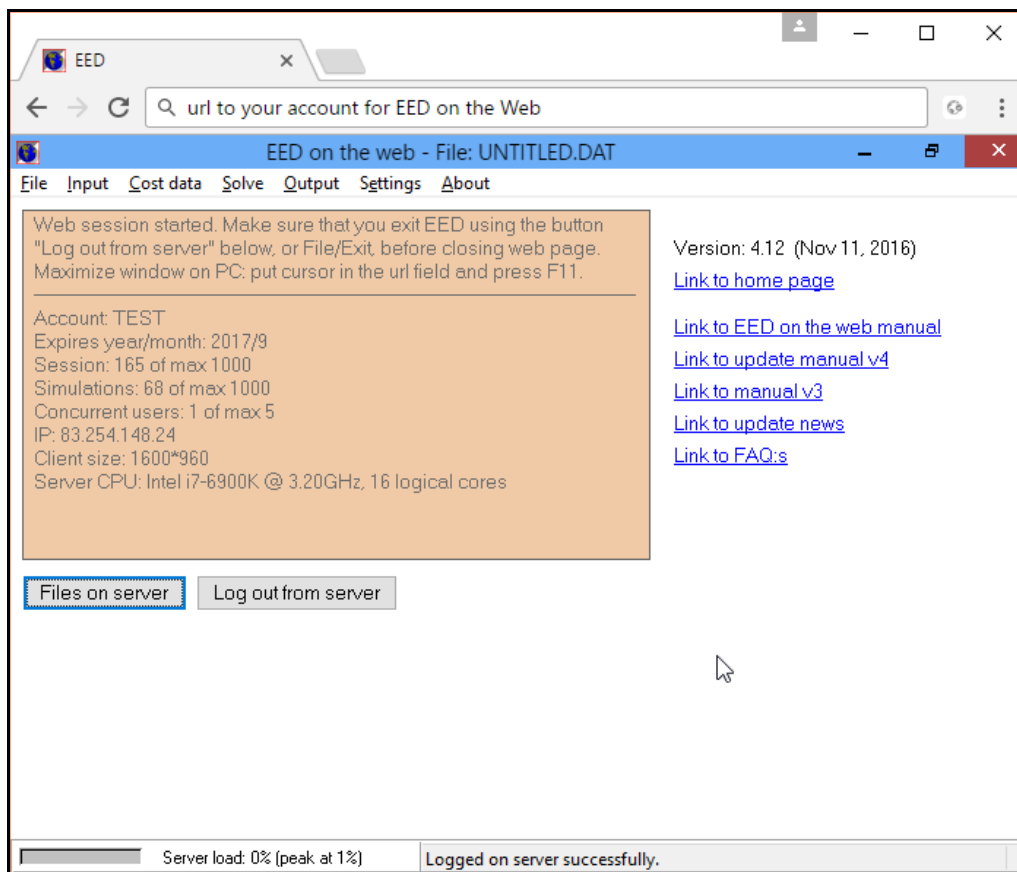
1. WHAT IS EED ON THE WEB.....	3
2. USING EED ON THE WEB.....	5
2.1 INTRODUCTION	5
2.2 WORKING WITH LOCAL FILES AND SERVER FILES	5
2.3 LOGOUT FROM SERVER BEFORE CLOSING WEB PAGE	7
2.4 HOW TO SAVE THE EED WEB LINK AS A BOOKMARK	7
2.5 SOME QUESTIONS & ANSWERS	7

1. What is EED on the web

EED is now available to run on a dedicated server from any operating system and/or device with an HTML5-compliant web browser, such as IE10/11, Chrome, Safari, Firefox, Opera, etc. It supports PC, Mac, iPad, iPhone, Chromebook, Android and many other popular devices.

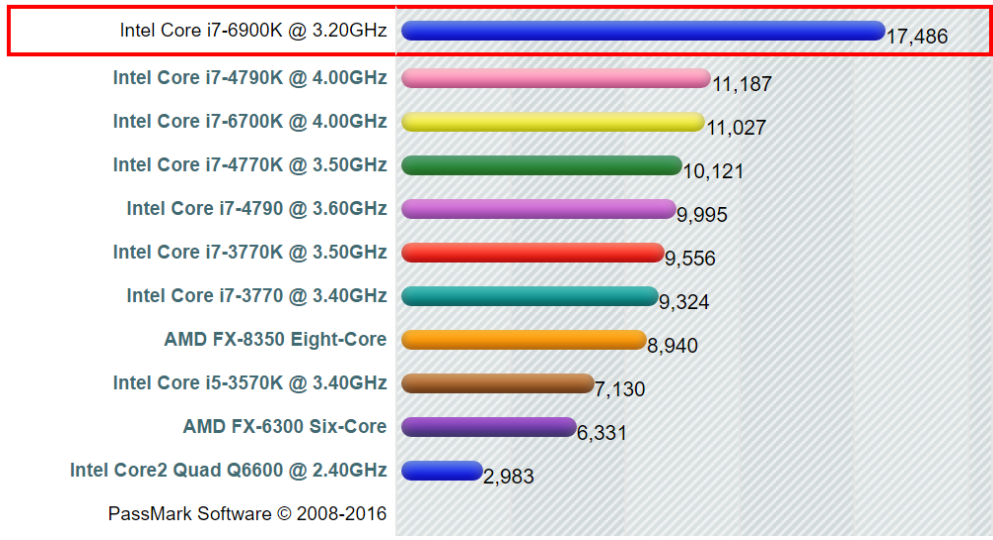
There are many advantages running EED on a dedicated server:

- Extreme calculation performance. We use very powerful cpu:s allowing quick simulations and optimizations for both monthly and hourly values for loads.
- You don't have to install/update EED. It has always the latest version.
- Access it from anywhere via a web browser on your PC, Mac, IPad, IPhone, smartphones, tablets, TV:s, etc.
- Share your project files on the server with colleagues. There can even be simultaneous concurrent users accessing the server.



A high-end cpu (I7-6900K) is currently used on the server. The graph below shows the relative performance of the I7-6900K compared to the 10 other common cpu:s in terms of the "PassMark CPU Mark" benchmark test.

CPU Mark Relative to Top 10 Common CPUs
As of 11th of November 2016 - Higher results represent better performance



2. Using EED on the web

2.1 Introduction

All the input and simulations are made in the same way as in the normal desktop version of EED v4. For reference, please see <http://www.buildingphysics.com/manuals/EED4.pdf>

There are just a few concepts to keep in mind when working with the EED web version, see below.

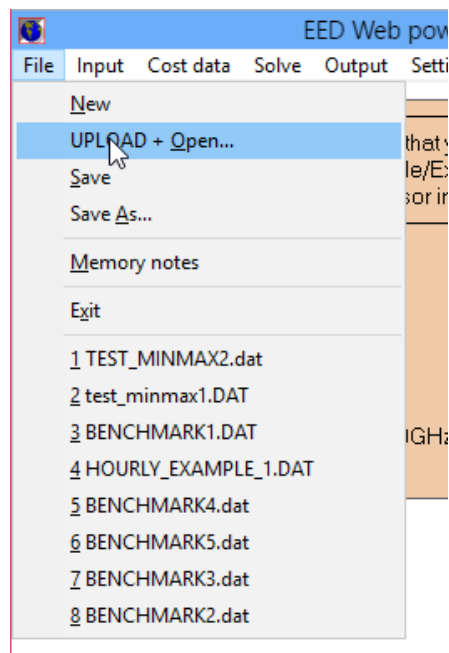
2.2 Working with local files and server files

Dropbox functionality has been added on Dec 22, 2016. This will make it easier to work directly with files on the server and also to share the files with colleagues. If you are using Dropbox and want access to your folder just send an email to info@blocon.se.

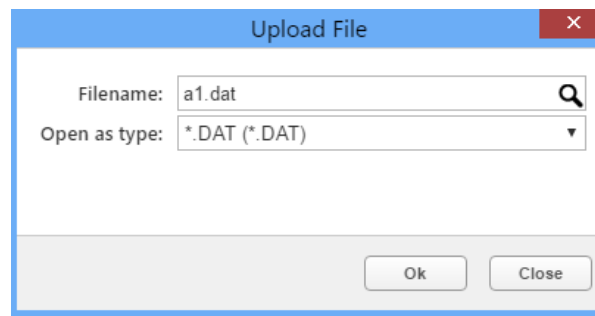
“EED on the Web” uses the account folder on the server as a working directory. You can create new projects and save/open them in this folder. It is possible to upload and download any files such as input files, load files, borehole config files, output files and so on from/to your local PC. If you use Dropbox, the account folder on the server will be synced with a Dropbox folder on your local folder (named “EED_accountname”) and file handling will become very easy.

If you do not use Dropbox, it is quiet easy to upload/download files to/from server. This is described below.

Press “UPLOAD + OPEN...” in the file menu to upload a local input file from your pc (or other device) to the server:



Give filename or press the search tool to browse in your local folders:

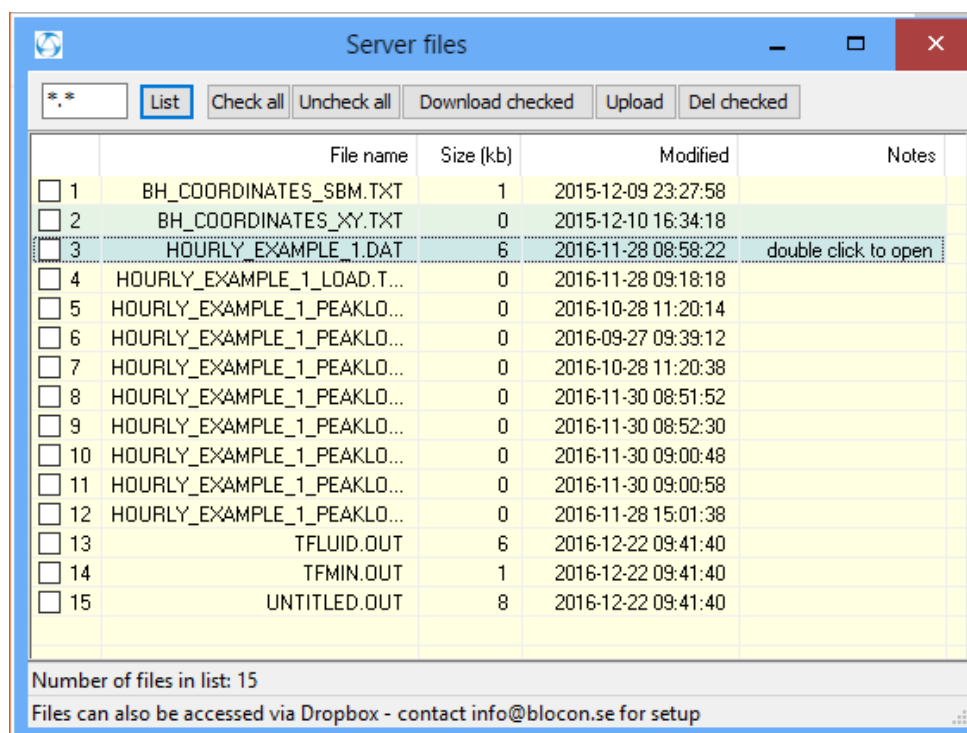


In this case, input file “a1.dat” will be uploaded and opened in EED.

Note that file menu items “Save” and “Save As...” will save the file to your server directory. (and not to your local folder).

Press button “Files on server” to access the Server files window. From this window you can do the following:

- Listing of files: use the mask “*.*” to list all files, and e.g. “b*.dat” to list all input files that begins with “b”.
- Open an input file on the server: double click any row with a dat-file.
- Download checked file(s) from the server to your local PC/Mac/device. The files will be zipped and downloaded as a zip-file. If downloaded on e.g. an IPad/IPhone/etc, the file can be save into e.g. a cloud storage (Dropbox, Onedrive, Google drive, etc).
- Upload files from your local PC to the server. You can upload files with extension “dat” (input files) and “txt” (such as load files and config boreholes files).
- Delete checked file(s).



2.3 Logout from server before closing web page

Make sure that you exit EED using the button "Log out from server" (or menu item File/Exit) before closing the EED web page or browser. Otherwise your account may be locked until it is automatically timed out by the server. In that case please wait for at least 1 hour before trying to log in again."

2.4 How to save the EED web link as a bookmark

Whatever platform you're using, you can save the EED link as a bookmark for quick access. Below is instructions how to do it on the Safari Web browser on your iPhone/iPad/iPod.

First, open your browser by tapping on the Safari and navigate to the EED Web page that you wish to add as a bookmark. Once it has finished loading tap on the Share button, located at the bottom of your screen and represented by a square and up arrow. The iOS Share Sheet should now be visible, overlaying the lower half of your browser window.

Select the option labeled Add Bookmark, usually found along the bottom row of icons. The Add Bookmark screen should now be displayed, containing an editable field where you can specify the name of the bookmark (e.g. "EED") along with the Web page's icon and URL. You are also given the option of specifying the bookmark's location, which is set to Favorites by default.

2.5 Some questions & answers

Question

How do you count simulations? If I make a simulation, change one parameter, and start the simulation again, would it be counted as two simulations?

Answer

The simulation counter is incremented upon any start of

- "Solve mean fluid temperatures F9"
- "Solve required borehole length F10"
- "Solve required borehole length – Optimization F11"

So, changing a parameter and solving again, increases the count by one.

Question

If I buy a "EED on the web" license, would I get a user account to log on your web site. Can I log on to your web site from two computers to start two simulations concurrent? Please tell me the handling when two users are using "EED on the web"

Answer

Yes, you will get a link and username and password to login.

You can log in from different PC:s (or any device with a compliant web browser). By default 3 concurrent logins are allowed (this can be changed upon request).

When multiple sessions are concurrent they will all work in the same account folder. This means that if multiple users work with the same project (i.e. input file) there is a risk that one user will over-write another users data. The behavior is exactly the same if e.g. two instances of the standard EED desktop are started on the same PC; both can access (read and write) the same input files. This can however be avoided if e.g. each user saves the files as "projectname_username_date.dat" to avoid conflicts.

You can of course also have different user accounts. Each user will have its own folder, and files are not shared. To share a file, you will need to download it from the server and email/pass it to the other user (or share Dropbox folders). The other user can then upload it to his/her account folder on the server). Another way is to have both accounts open in two tabs in the browser and upload/download any files to/from any server account to/from the local PC.

We recommend the use of Dropbox since file handling will become very easy.

Each time any of the concurrent user makes a simulation, the common account counter for simulations will be increased.

Question

Which disadvantages do I have by using “EED on the web” comparing to a “normal local installation”?

Answer

The only drawbacks what I can see is that internet connection is lost on your side or on our side, or that the server may be down for hardware failure, etc.

This is the reason we want the user to also have the desktop version if acute simulations are needed. Our server has however been stable during a test period of the last month.

A minor drawback may be that some files (such as load files) needs to be uploaded (at least once), and that some files (output files) needs to be downloaded if you want to access them locally. However the handling of this is fast and quite easy, especially with Dropbox.